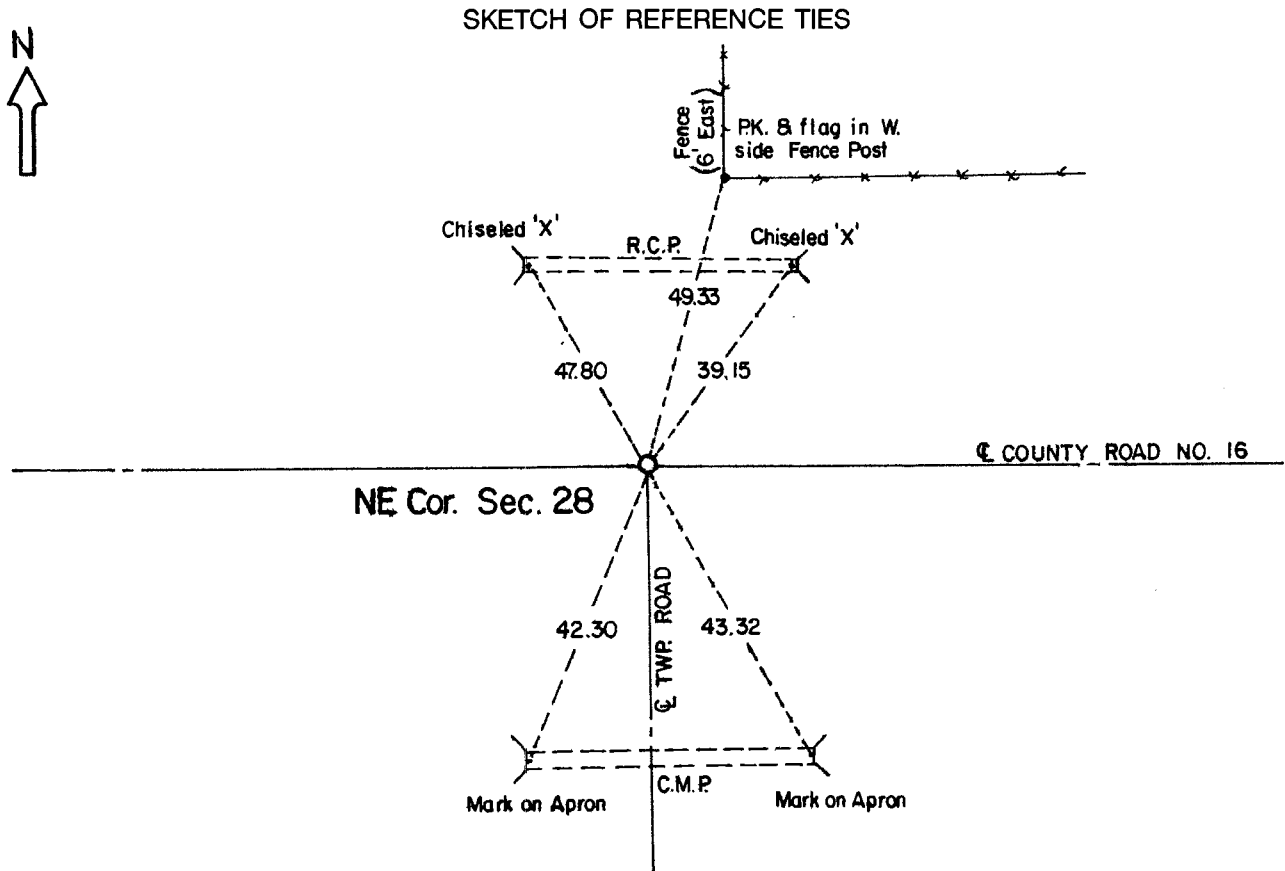


CERTIFICATE OF LOCATION OF GOVERNMENT CORNER

Northeast Corner of Section **28** , Township **108** , Range **41** 5th P.M.
STATE OF MINNESOTA, County of Murray.

Statement: May 26, 1989 - Found a concrete monument, a 1/2 inch x 15 inch iron rod, and several field stones. Placed a Minnesota Department of Transportation Cast Iron Monument.



Statement of evidence relative to this corner location is on the back of page.

I hereby certify that this document and the data contained herein was prepared by me or under my direct supervision and that I am a duly Registered Land Surveyor under the laws of the State of Minnesota.

Duane A. Bonnema
Duane A. Bonnema

Nov 6, 1989
Date

Minnesota Registration No. 14895

OFFICE OF THE COUNTY RECORDER
COUNTY OF MURRAY **NOV 15 1989**

I hereby certify that this document was filed in the County Recorder's office at ____ M. on the ____ day of ____ A.D., 19__

County Recorder *James V. Johnson*

By _____, Deputy
DOCUMENT NO. _____

Northeast Cor. Sec. 28 T108N-R41W

Statement:

- August 1861 Original Government Land Office Surveyor L. G. M. Fletcher records in his field notes, "built mound with trench pits, charred stake, per instructions."*
- June 4, 1907 J. W. Woolstencroft, County Surveyor, records in the County Surveyor's Record Book, page 201, "Government Corner." He also made a note that there is a stone at the Corner. He also notes that a fence Corner post to the North is 6 feet East of the stone.*
- 1936+ In the office of the Murray County Highway Engineer, in the County Surveyor's Record Book, it shows that a concrete monument was placed with an Iron pin on top, while survey work was done in Section 21.*
- April 7, 1970 In the office of the Murray County Highway Engineer, in the County Surveyor's Record Book, it shows that a field stone was located 1.8 feet below gravel surface and that 1 3/4 inch x 12 inch bolt was placed above center of stone. There were witness ties established to the Corner while survey work was done in Section 28.*
- April 1972 The Murray County Highway Engineer's office records that they found a "Concrete monument" at the Corner and they placed a steel pin above the monument.*
- May 26, 1989 Duane A. Bonnema, LS Reg. No. 14895, found a 6 inch x 6 inch x 11 inch Concrete monument with 2 railroad spikes alongside it at 1 foot below the road surface. At 2 feet below the surface, a 3/4 inch x 12 inch iron bolt was found with a 1 inch square head. At a depth of 3 1/2 feet a 2 inch x 6 inch x 10 inch stone was found along with several 6 inch diameter stones below it in a cluster.*